



*"The Ultimate Performance Rotary Screw Air Compressor"*  
*Dedicated To Quality, Committed To Support*

PROPERTY FOR SALE :

SHEET METAL FABRICATED BUILDING WELL INSULATED WITH  
25611 SQ.FT. SPACE AND ATTACHED 3200 SQ.FT. STORAGE BUILDING.  
GROUND LEVEL DOCK AND (2) SEMI TRAILER DOCKS

ZONED AIR CONDITIONING IN OFFICE AREA, NATURAL GAS HEATING  
THRU-OUT , CITY WATER AND NUMEROUS ELECTRICAL DISCONNECTS  
AND HIGH ELECTRICAL POWER .

SITUATED ON 2.3 ACRES WEST OF MICHIGAN CITY.

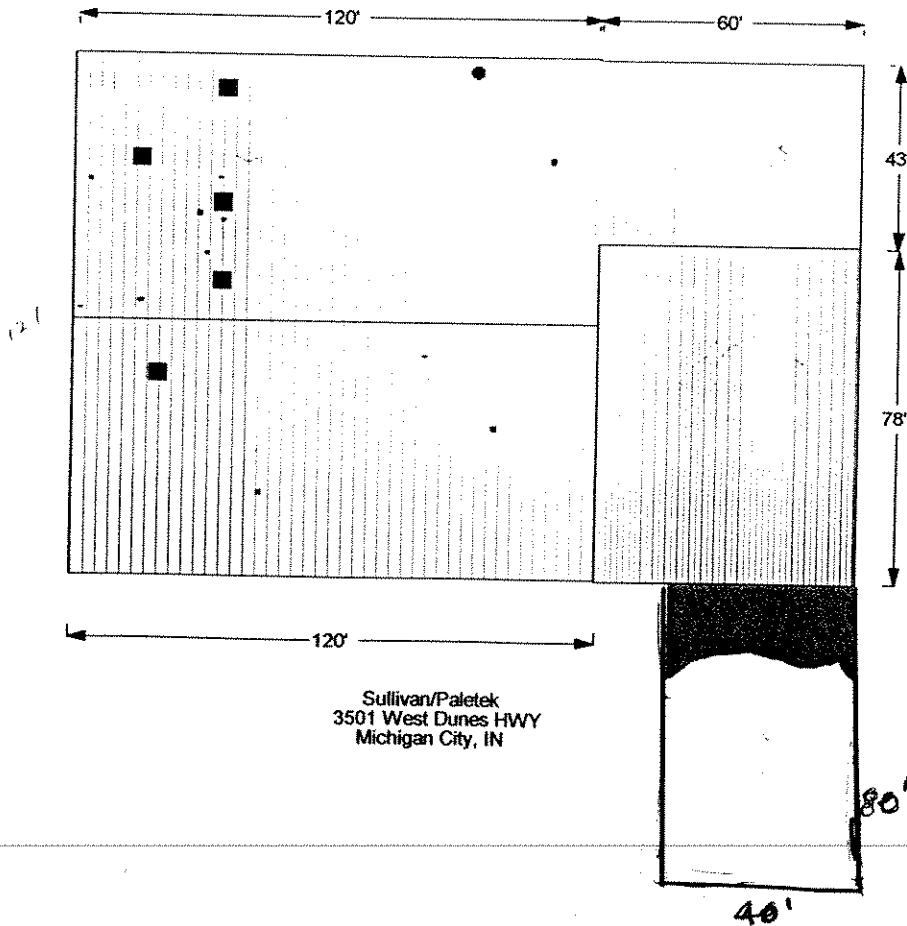
CALL 219 874 2497 FOR VIEWING THE PROPERTY.

ASKING PRICE \$ 795,000.00

**Sullivan-Paletek**  
**3501 West Dunes Hwy**  
**Michigan City, Indiana 46360**  
**Attention: Mr. Bob Kiser**

**Sullivan-Paletek**  
**Approximately 21,800 Sq. Ft.**

**April 28, 2003**



21780 / SQ FT  
 3871 UP  
 -----  
 25611

STORAGE  
 BLDG.  
 3200  
 -----  
 28811 SQ F